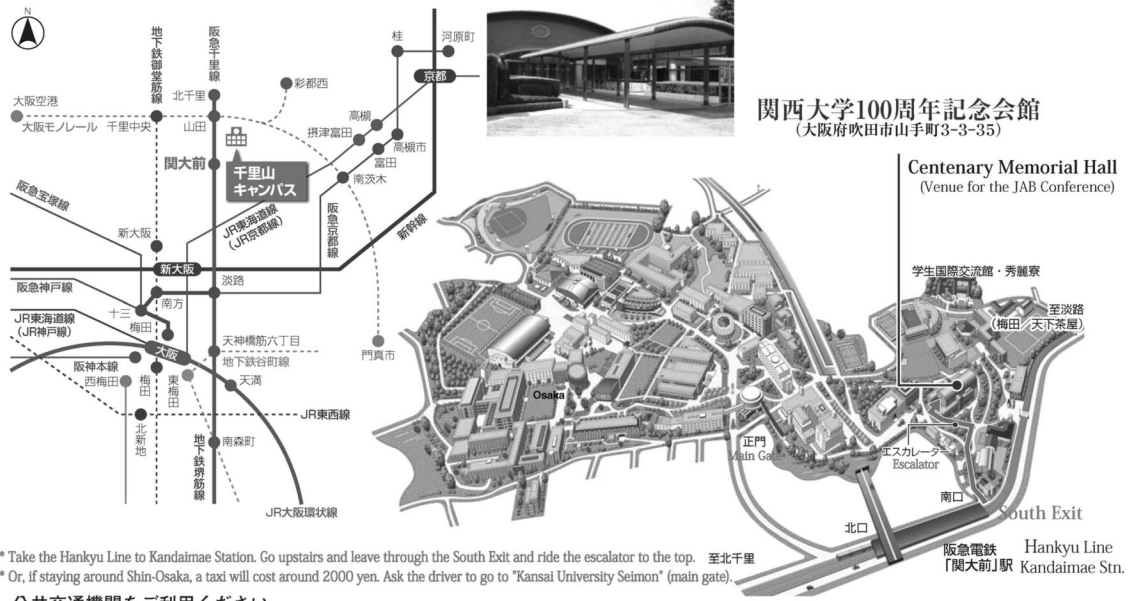


会場へのアクセス Kansai University Senriyama Campus

ACCESS MAP

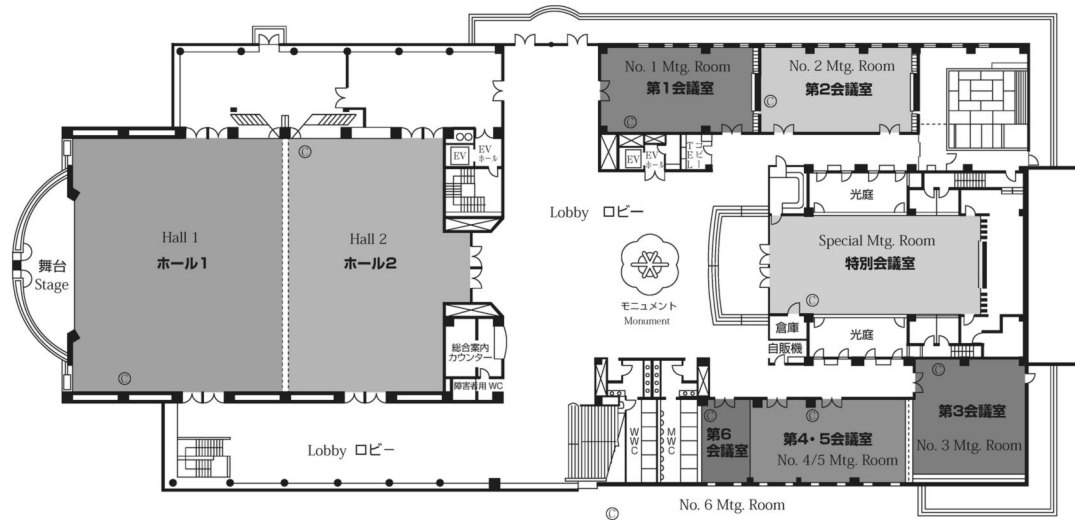


- * Take the Hankyu Line to Kandaimae Station. Go upstairs and leave through the South Exit and ride the escalator to the top. 至北千里
- * Or, if staying around Shin-Osaka, a taxi will cost around 2000 yen. Ask the driver to go to "Kansai University Seimon" (main gate).

公共交通機関をご利用ください。

- 阪急電鉄「梅田(大阪)」駅から「北千里行」で十三「淡路」を経て「関大前」駅下車(この間約20~25分)、または阪急電鉄「梅田(大阪)」駅から「京都河原町行」(特急・快速急行・準急もしくは普通)で「淡路」駅下車、「淡路」駅で「北千里行」に乗り換え「関大前」駅下車(この間約15分)、いずれも徒歩約5分。
※通勤特急は「淡路」駅には停車しませんのでご注意ください。
- 地下鉄堺筋線(阪急電鉄千里線相互乗り入れ)「天下茶屋」駅から「北千里行」で日本橋・北浜・天神橋筋六丁目(天六)・淡路を経て「関大前」駅下車(この間約40~45分)、徒歩約5分。
- JR新幹線「新大阪」駅から地下鉄御堂筋線「なかもず行」で「西中島南方」駅下車。阪急電鉄「南方」駅で「北千里行」に乗り換え、淡路を経て「関大前」駅下車(この間約30~35分)、徒歩約5分。
- 大阪国際空港(伊丹空港)「大阪モノレール」大阪空港駅から「門真市行」で蛸池・千里中央を経て「山田」駅下車。阪急電鉄「山田」駅で「天下茶屋行」か「梅田行」に乗り換え、「関大前」駅下車(この間約30~35分)、徒歩約5分。

会場案内図(100周年記念会館) Kansai University Centenary Memorial Hall



会場案内図
日程
プログラム他

本部企画
専門分科会

Sept.6 (Wed)

IA

IB

IC

II

IP

Sept.7 (Thur)

IIA

IIB

IIC

III

III P

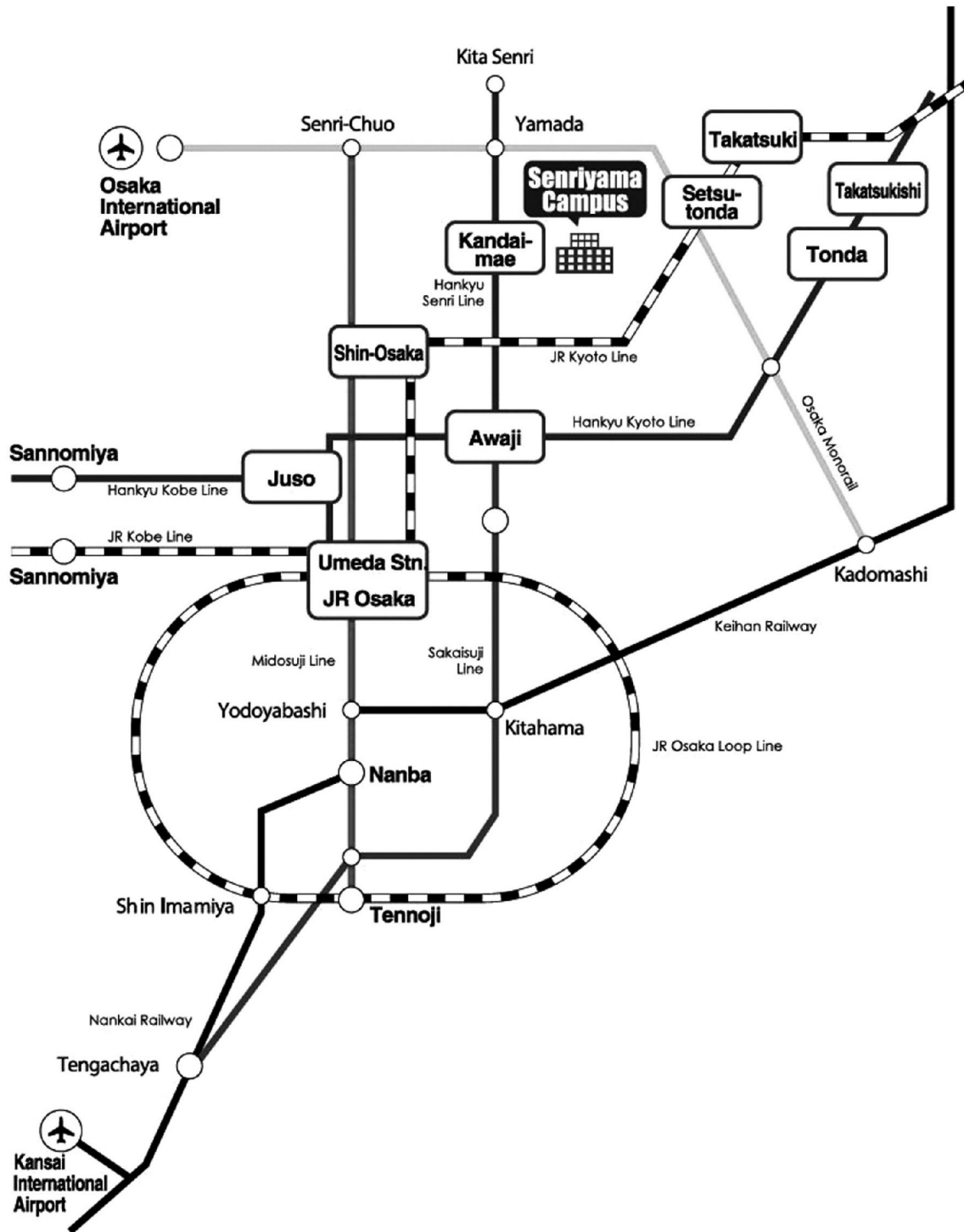
Sept.8 (Fri)

IIIA

IIIC

IIII

IIIP



参加者の皆様へ

1. 参加受付は、関西大学 100 周年記念会館ロビーにて下記の時間帯で行います。

9月6日（水）	11:00 ～ 16:30
9月7日（木）	8:00 ～ 16:30
9月8日（金）	8:00 ～ 11:30

- ※ 会員は受付で大会参加費（正会員：5,000 円、学生会員：3,000 円）を収めてください。大会参加章（ネームカード）をお渡ししますので、会期中は必ず着用してください。参加章をつけていない場合、入場および傍聴をお断りすることがあります。
- ※ 海外からの参加者は、受付で参加費（一般：5,000 円、学生：3,000 円）を収め、大会参加章と研究発表抄録をお受け取りください。

2. 平成 29 年度会費未納の会員は、大会参加費と併せて収めてください。

3. 会員以外で大会に参加される方は、受付で臨時会員とご記入の上、臨時参加費（一般：5,000 円、学生：3,000 円）を収め、大会参加章と研究発表抄録をお受け取りください。総会以外は、全て会員と同じ待遇を受けることができます。

4. 会員の方はこの研究発表抄録をご持参ください。プログラムは配付しません。

5. 大会期間中、食堂は営業しています。

6. 宿泊は各自でご手配ください。

座長の皆様へ

1. 座長は、担当される演題の発表時間 30 分前までに、発表会場受付にお越しください。

2. 座長は質疑応答に際し、質問者に対して「所属・氏名を述べた後、簡潔に質問する」ようご指示ください。

3. 座長は、発表時間厳守の遂行をお願いします。

To All Participants

1. Reception will be in the lobby of the Kansai University Centenary Memorial Hall at the following times:
 Wednesday September 6: 11:00–16:30
 Thursday September 7: 08:00–16:30
 Friday September 8: 08:00–11:30
- ※ Members are requested to pay the conference participation fee at the reception (full members: 5000 yen; student members: 3000 yen). Participants will be given a name badge which they should wear for the duration of the conference. Participants who do not wear a name badge may be refused admission to the presentations.
- ※ For participants from overseas: At the reception, please pay the entrance fee of 5000 yen (3000 yen for students), and take a name badge and research presentation abstracts.
2. Members who have not yet paid their membership fee for 2017 are requested to pay together with the conference fee.
3. For non-member participants: At reception please register as a temporary member, and pay the entrance fee of 5000 yen (3000 yen for students), and take a name badge and research presentation abstracts. With the exception of attendance at the general meeting, temporary members will receive the same treatment as a full member.
4. Members are requested to bring their research presentation abstracts. Programs will not be distributed.
5. The university cafeteria will be open for the duration of the conference.
6. Participants are requested to make their own arrangements for accommodation.

To All Chairpersons

1. Chairpersons are requested to report to the reception at the presentation venue no later than 30 minutes before the start of the session that they are supervising.
2. During the question and answer session, chairpersons are requested to instruct questioners to state their name and affiliation, and to keep their questions brief.
3. Chairpersons are requested to please keep the session on time.

To All Presenters

1. There are two types of presentation: oral presentations and poster presentations.
The oral presentations are 12 minutes with a 3-minute Q&A session.
(Only English is used in the International Session. Japanese is used in the others.)
The poster sessions have a Q&A session if the need arises.
(The language in the Poster Session is English)
2. Presenters that have materials to be handed out, please hand them to the reception at the appropriate presentation venue.
3. Presenters are requested to complete registration at the appropriate venue no later than 30 minutes before the start of the presentation session. At that time, please submit 100 copies of any handouts. If using data such as a PowerPoint presentation, please bring your own computer. If using a Macintosh computer, please be sure to bring a conversion connector, a VGA adaptor and a power adaptor.
- ※ Please follow the instructions given by the chairperson.
- ※ The presentation time is 12 minutes followed by a 3-minute Q&A session (15 minutes in total). Alarms will be made in the following order:
 - Two minutes before the end of the presentation.
 - To signal the end of the presentation and start of the Q&A session.
 - To signal the end of the Q&A session.
4. A certificate will be handed out to presenters in the International Session after making an oral presentation or a poster presentation.
5. To presenters in the Poster Session, please complete registration at the reception in the appropriate venue by 12:00 on September 6, and by 08:30 on September 7 and 8, and then post on the designated notice board.
6. Changes to the presenter cannot be made. However, in the case of illness or other unavoidable circumstances, please contact the Japanese Academy of Budo immediately and follow their instructions.